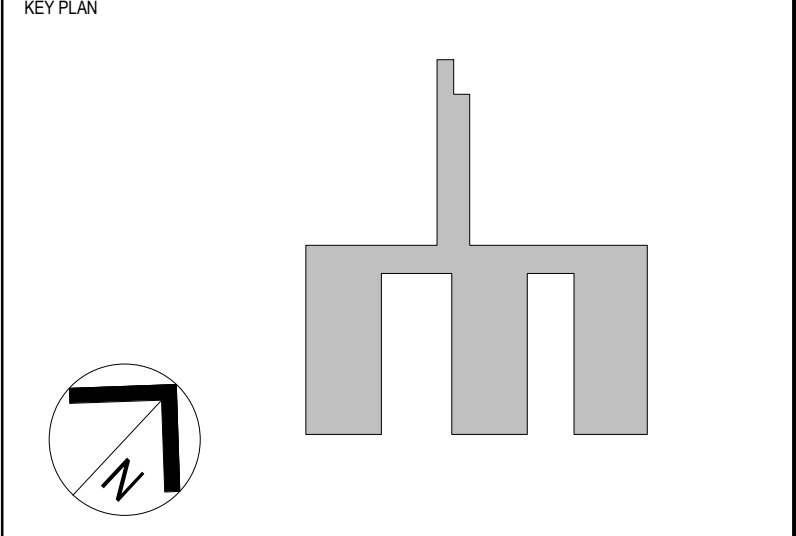


**NOTES:**  
 TO BE READ IN CONJUNCTION WITH SERVICES, STRUCTURAL & CIVIL DOCUMENTATION. ANY DISCREPANCY TO BE BROUGHT TO THE ATTENTION OF JACOBS.

**LEGEND:**

- BOUNDARY LINE
- XX EXISTING BUILDINGS BUILDING NUMBER
- ENGINEERING/PLANT
- TRAVEL - STAFF
- TRAVEL - PUBLIC
- CLINICAL AREA
- ADMIN AREA
- SUPPORT/ BACK OF HOUSE
- SHARED AREA
- LINKS/TUNNEL/ BRIDGE/HOSP ST
- SHELL AREA
- REFURBISHMENT

REV	DATE	BY	CHKD	APPD	REVISION
10	22.05.18	BY	WB		MAIN WORKS 70% DD ISSUE
9	12.04.18	BY	WB		ISSUED FOR SSIA
8	29.03.18	BY/WF/RYM/MS/AT/ND	WB		SCHEMATIC DESIGN ISSUE
7	16.03.18	MY	WB		SCHEMATIC DESIGN DRAFT ISSUE
6	26.05.16	JS	CY		SHELLED AREAS SHOWN
5	13.05.16	JS/CA	CY		SCHEME DESIGN FROZEN BACKGROUNDS
4	15.04.16	JS	CY		70% SCHEME DESIGN ISSUE
3	23.03.16	JS	CY		UPDATES FOR CONSULTANT ISSUE
2	15.03.16	JS	CY		UPDATES TO LOADING DOCK
1	11.03.16	JS	CY		PRELIMINARY ISSUE



LEVEL 7, 777 PACIFIC HIGHWAY  
 NORTH STONEY  
 NSW 2158  
 AUSTRALIA  
 TEL: +61 2 9528 2100  
 FAX: +61 2 9528 2010  
 WEB: jacobs.com

PROJECT  
**CONCORD HOSPITAL REDEVELOPMENT STAGE 1**  
 HOSPITAL ROAD  
 CONCORD NSW 2139

TITLE  
**OVERALL PLAN - BASEMENT**

**DRAWING STATUS**

**SCHEMATIC DESIGN**

DRAWN: GAM/WM/REF	DRAWING CHECK: WB
DESIGNED: AC/DG	DESIGN REVIEW: CY
REVIEWED:	DATE:
APPROVED:	DATE:
SCALE: 1:400	
PROJECT No: IA064700	DRAWING No: NEWB-AR-DRG-0050
REV: 10	

26/06/2018 4:17:43 PM