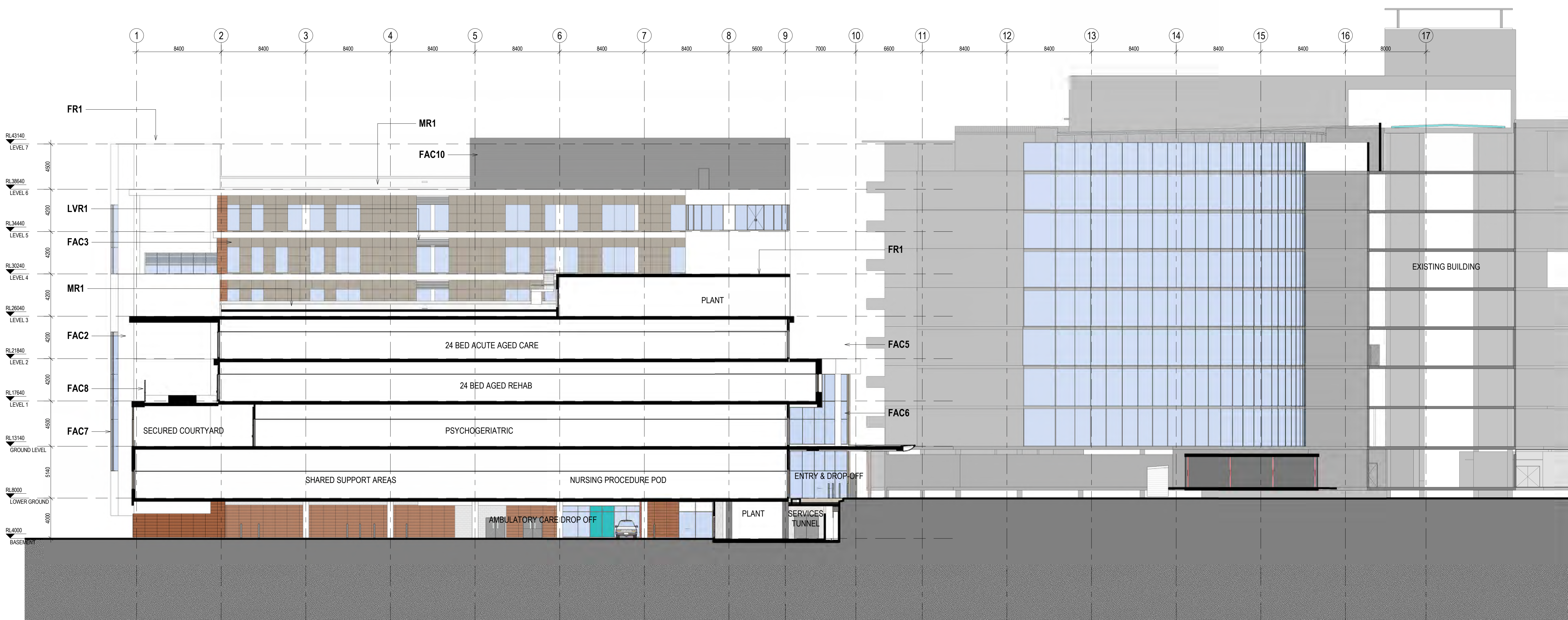




1 SECTION A
15G2 1:200



2 SECTION B
15B2 1:200

NOTES:
TO BE READ IN CONJUNCTION WITH SERVICES, STRUCTURAL & CIVIL DOCUMENTATION. ANY DISCREPANCY TO BE BROUGHT TO THE ATTENTION OF JACOBS.

ELEVATION LEGEND:

- FAC1 TERRACOTTA CLADDING
- FAC2 ACRYLIC RENDER FACADE SYSTEM (STO)
- FAC3 ALUMINIUM NON-COMPOSITE CLADDING
- FAC5 FRAMED GLAZING (WHITE / TURQUOISE / GREY DENOTES COLOURBACK PANEL)
- FAC6 CURTAIN WALL GLAZING, EXTRUDED ALUMINIUM FRAME (WHITE DENOTES COLOURBACK PANEL)
- FAC7 CURTAIN WALL (CURVED TRANSOMS + GLAZING) VERTICALS: SILICONE/UNCAPPED HORIZONTALS: CAPPED
- FAC8 FIXED GLASS BALUSTRADE SCREEN WITH HIGH LEVEL CLEAR GLASS OPERABLE LOUVRES
- FAC9 FRAMELESS FIXED GLAZING
- FAC10 METAL SHEET CLADDING (COLORBOND)
- FR1 FLAT ROOF, MEMBRANE WITH SELECT PAVERS/BALLAST
- MR1 METAL ROOF SHEETING WITH 100mm INSULATION ROOF RAISERS
- LVR1 HORIZONTAL LOUVRES

REV	DATE	BY	CHKD	ISSUE
11	13.07.18	BY	WB	ISSUED FOR COORDINATION
10	22.06.18	BY	WB	MAIN WORKS 70% DO ISSUE
9	12.04.18	BY	WB	ISSUED FOR SSDA
8	29.03.18	MW/BF BY/MS AY/LWD	WB	SCHEMATIC DESIGN ISSUE
7	16.03.18	MW	WB	SCHEMATIC DESIGN DRAFT ISSUE
6	23.02.18	MW/MR	WB	MAIN WORK 70% SD ISSUE
5	10.11.17	BY		
4	15.02.17	GA	CY	COMBINED STAGE 1A & 1B UPDATE
3	01.07.16	GA	CY	SCHEME DESIGN UPDATE
2	10.06.16	AF	CY	100% SCHEME DESIGN FINAL ISSUE
1	20.03.16	JS	CY	SCHEME DESIGN DRAFT ISSUE
1				PRELIMINARY ISSUE

KEY PLAN	DATE	DRAWN	REV'D	APP'D	AMENDMENT



LEVEL 7, 177 PACIFIC HIGHWAY
NORTH SYDNEY
NSW 2060
AUSTRALIA

TEL: +61 2 9528 2100
FAX: +61 2 9528 2010
WEB: jacobsc.com

PROJECT
**CONCORD HOSPITAL
REDEVELOPMENT STAGE 1**

HOSPITAL ROAD
CONCORD NSW 2139

TITLE
SECTION SHEET 1

DRAWING STATUS
DESIGN DEVELOPMENT

DRAWN MW/BY	DRAWING CHECK PC/WB
DESIGNED AC/DG	DESIGN REVIEW CY
REVIEWED	DATE
APPROVED	DATE

SCALE
1:200

PROJECT No.	DRAWING No.	REV
IA064700	NEWB-AR-DRG-7101	11

1/09/2018 2:24:22 PM