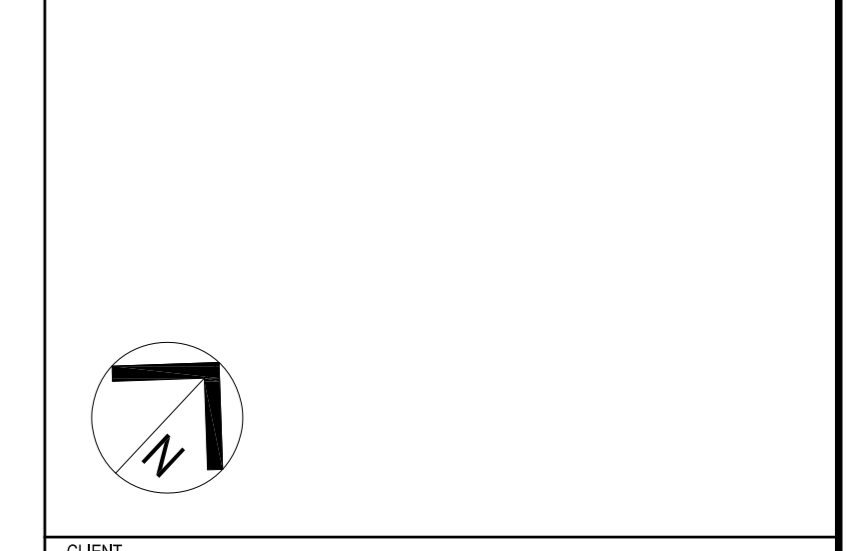


- Existing tree to be Retained
- Existing tree to be removed
- Existing garden bed to be retained
- Proposed tree
- Proposed Shrubs Grasses and Groundcovers
- Concrete Edging
- Steel Edge
- Proposed concrete
- Proposed Unit Paving
- Proposed Unit Paving
- Artificial Turf
- Proposed Turf
- Proposed Decomposed Granite
- Proposed Decorative Gravel
- Proposed Composite Timber Decking
- Fence

NOTES:
 TO BE READ IN CONJUNCTION WITH ARCHITECTURAL SERVICES, STRUCTURAL & CIVIL DOCUMENTATION. ANY DISCREPANCY TO BE BROUGHT TO THE ATTENTION OF SITE IMAGE.

2	21.06.2018	JD	NM	70% DD	
1	17.04.2018	JD	NM	DESIGN DEVELOPMENT	
REV	DATE	DRAWN	REV'D	APP'D	AMENDMENT



CLIENT

Health Infrastructure

SITE IMAGE

Level 1, 3-5 Baptist Street
 Redfern NSW 2016
 Australia
 Tel: (61 2) 8332 5600
 Fax: (61 2) 9508 2877
 www.siteimage.com.au
 Site Image (NSW) Pty Ltd
 ABN 48 691 262 390

JACOBS

LEVEL 7, 177 PACIFIC HIGHWAY
 NORTH SYDNEY
 NSW 2060
 AUSTRALIA

TEL: +61 2 9028 2100
 FAX: +61 2 9028 2510
 WEB: jacobson.com

PROJECT
CONCORD HOSPITAL REDEVELOPMENT STAGE 1

HOSPITAL ROAD
 CONCORD NSW 2139

TITLE
LANDSCAPE PLAN BASEMENT

DRAWING STATUS
DESIGN DEVELOPMENT

DRAWN	JD	DRAWING CHECK	NM
DESIGNED	NM	DESIGN REVIEW	NM
REVIEWED	NM	DATE	
APPROVED		DATE	

SCALE
1 : 200

DRAWING No.
SS15-3002-NEWB-LS-DRG-111

REV
2