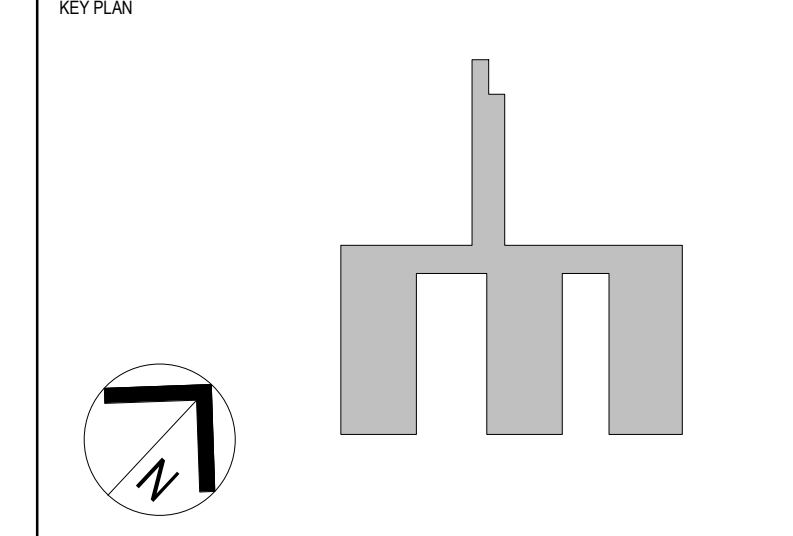


NOTES:
TO BE READ IN CONJUNCTION WITH SERVICES, STRUCTURAL & CIVIL DOCUMENTATION. ANY DISCREPANCY TO BE BROUGHT TO THE ATTENTION OF JACOBS.

LEGEND:

- BOUNDARY LINE
- XX EXISTING BUILDINGS BUILDING NUMBER
- ENGINEERING/PLANT
- TRAVEL - STAFF
- TRAVEL - PUBLIC
- CLINICAL AREA
- ADMIN AREA
- SUPPORT/ BACK OF HOUSE
- SHARED AREA
- LINKS/TUNNEL/ BRIDGE/HOSP ST
- SHELL AREA
- REFURBISHMENT

| REV | DATE | ISSUED | BY | APPD | REVISION |
|-----|----------|---------------------------|----|------|----------------------------------|
| 9 | 22.08.18 | BY | WB | | MAIN WORKS 70% DD ISSUE |
| 8 | 12.04.18 | BY | WB | | ISSUED FOR SSDA |
| 7 | 29.03.18 | MW/EF BY/MMS JAT/VD | WB | | SCHEMATIC DESIGN ISSUE |
| 6 | 16.03.18 | MW | WB | | SCHEMATIC DESIGN DRAFT ISSUE |
| 5 | 20.05.16 | JS | CY | | SHELLED AREAS SHOWN |
| 4 | 13.05.16 | JS/CA | CY | | SCHEME DESIGN FROZEN BACKGROUNDS |
| 3 | 15.04.16 | JS | CY | | 70% SCHEME DESIGN ISSUE |
| 2 | 23.03.16 | JS | CY | | UPDATES FOR CONSULTANT ISSUE |
| 1 | 11.03.16 | JS | CY | | PRELIMINARY ISSUE |



LEVEL 7, 177 PACIFIC HIGHWAY
NORTH STONEY
NSW 2158
AUSTRALIA

TEL: +61 2 9528 2100
FAX: +61 2 9528 2010
WEB: jacobsc.com

PROJECT
CONCORD HOSPITAL
REDEVELOPMENT STAGE 1
HOSPITAL ROAD
CONCORD NSW 2139

TITLE
OVERALL PLAN - LEVEL 1

DRAWING STATUS
SCHEMATIC DESIGN

| | |
|-------------------------|---------------------------------|
| DRAWN: GA/MW/MR/EF | DRAWING CHECK: WB |
| DESIGNED: AC/DG | DESIGN REVIEW: CY |
| REVIEWED: | DATE: |
| APPROVED: | DATE: |
| SCALE: 1 : 400 | |
| PROJECT No: IA064700 | DRAWING No: NEWB-AR-DRG-0053 |
| REV | 9 |