

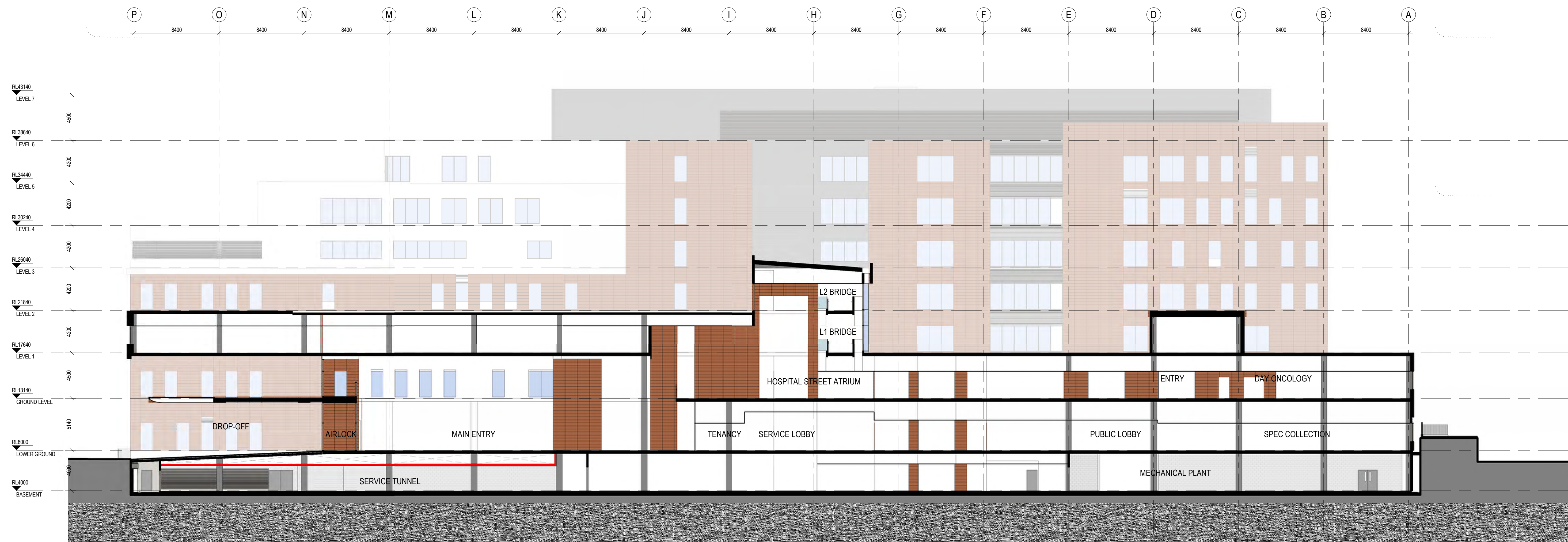
NOTES:
 TO BE READ IN CONJUNCTION WITH SERVICES, STRUCTURAL & CIVIL DOCUMENTATION. ANY DISCREPANCY TO BE BROUGHT TO THE ATTENTION OF JACOBS.

ELEVATION LEGEND:

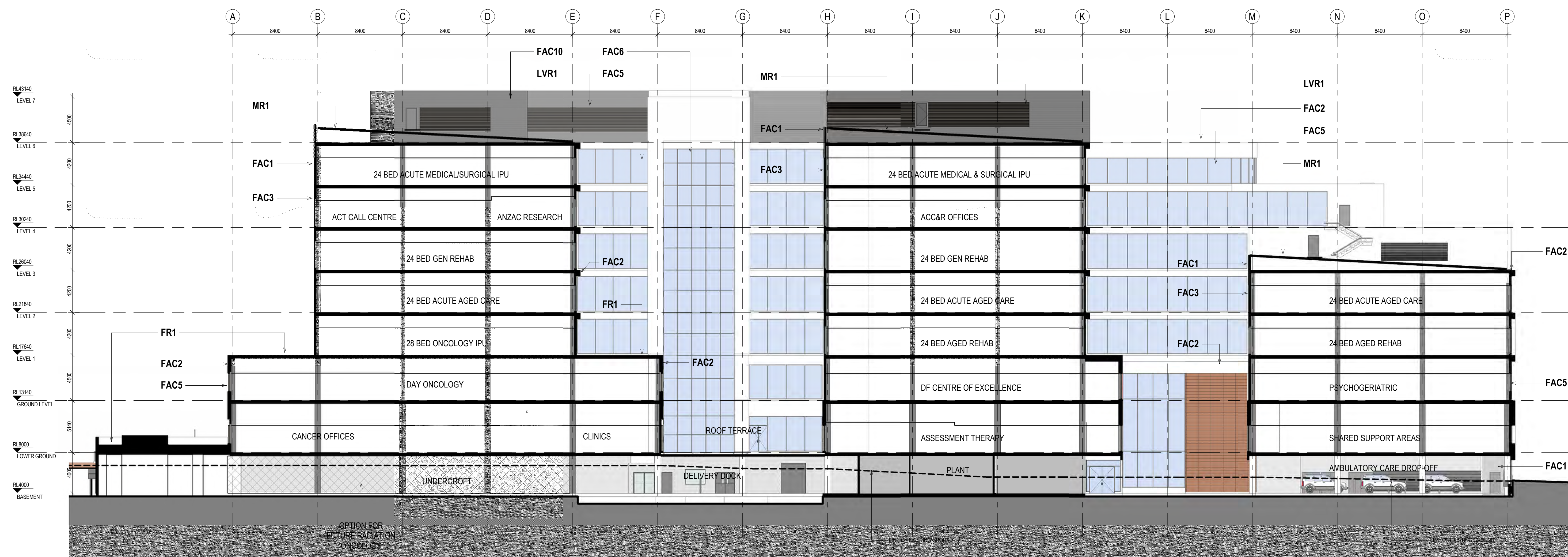
- FAC1 TERRACOTTA CLADDING
- FAC2 ACRYLIC RENDER FACADE SYSTEM (STO)
- FAC3 ALUMINIUM NON-COMPOSITE CLADDING
- FAC5 FRAMED GLAZING (WHITE / TURQUOISE / GREY DENOTES COLOURBACK PANEL)
- FAC6 CURTAIN WALL GLAZING, EXTRUDED ALUMINIUM FRAME (WHITE DENOTES COLOURBACK PANEL)
- FAC7 CURTAIN WALL (CURVED TRANSOMS + GLAZING) VERTICALS: SILICONE/UNCAPPED HORIZONTALS: CAPPED
- FAC8 FIXED GLASS BALUSTRADE SCREEN WITH HIGH LEVEL CLEAR GLASS OPERABLE LOUVRES
- FAC9 FRAMELESS FIXED GLAZING
- FAC10 METAL SHEET CLADDING (COLORBOND)
- FR1 FLAT ROOF, MEMBRANE WITH SELECT PAVERS/BALLAST
- MR1 METAL ROOF SHEETING WITH 100mm INSULATION ROOF RAISERS
- LVR1 HORIZONTAL LOUVRES

REV	DATE	BY	CHKD	APPD	DESCRIPTION
12	13.07.18	BY	WB		ISSUED FOR COORDINATION
11	22.06.18	BY	WB		MAIN WORKS 70% SD ISSUE
10	12.04.18	BY	WB		ISSUED FOR SDA
9	29.03.18	MW/EF/ST/MS/AY/LVD	WB		SCHEMATIC DESIGN ISSUE
8	16.03.18	MW	WB		SCHEMATIC DESIGN DRAFT ISSUE
7	23.02.18	MW/WR/ST/MS/AY/LVD	WB		MAIN WORKS 70% SD ISSUE
6	10.11.17				COMBINED STAGE 1A & 1B UPDATE
5	15.02.17	GA	CY		SCHEME DESIGN UPDATE
4	01.07.16	GA	CY		100% SCHEME DESIGN FINAL ISSUE
3	17.06.16	JS	CY		100% SCHEME DESIGN ISSUE
2	10.06.16	AF	CY		SCHEME DESIGN DRAFT ISSUE
1	29.03.16	JS	CY		PRELIMINARY ISSUE

KEY PLAN



1 LONGITUDINAL SECTION A
 15B2 1:200



2 LONGITUDINAL SECTION B
 15B2 1:200



LEVEL 7, 177 PACIFIC HIGHWAY
 NORTH SYDNEY
 NSW 2060
 AUSTRALIA
 TEL: +61 2 9528 2100
 FAX: +61 2 9528 2010
 WEB: jacobsc.com

PROJECT
CONCORD HOSPITAL REDEVELOPMENT STAGE 1
 HOSPITAL ROAD
 CONCORD NSW 2139

TITLE
SECTION SHEET 2

DRAWING STATUS	
DESIGN DEVELOPMENT	
DRAWN MW/BY	DRAWING CHECK PC/WB
DESIGNED AC/DG	DESIGN REVIEW CY
REVIEWED	DATE
APPROVED	DATE
SCALE 1:200	
PROJECT NO. IA064700	DRAWING NO. NEWB-AR-DRG-7102
	REV 12

1/09/2018 2:24:34 PM