



ARTIST IMPRESSION BURUDYARA EXTERIOR

Burudyara Concord Forensic Mental Health Unit

Construction on the new Concord Forensic Mental Health Unit is on track to begin in early 2024 with the building contract set to be awarded in March.

The purpose-built forensic mental health facility will be built as an expansion of the Concord Centre for Mental Health and its services, on the grounds of Concord Hospital. The project is part of the NSW Government's \$700 million investment in the Statewide Mental Health Infrastructure Program.

The project team are currently working through the final stage of the design process, detailed design. The detailed design phase delivers an in-depth view of each individual room and space being delivered and includes specifications for the layout of furniture, fittings and equipment.

Extensive consultation occurs with staff, clinicians, mental health consumers and the community during the design phase where their invaluable knowledge and experience helps shape the final outcomes and ensure the right needs are met.

Ongoing design will be supported by the Connecting with Country committee guided by the Health Infrastructure Connecting with Country Framework and we look forward to keeping you updated as the project progresses.

Burudyara means butterfly

The facility will be named 'Burudyara' (pronounced BOO-ruhd-YA-ruh), which is a local Aboriginal word meaning 'butterfly', in line with NSW Health's approach to building stronger connections between our facilities and the lands on which they are built.

It will complement existing forensic mental health services at Concord Hospital, providing low and medium secure mental health beds. The facility is due to be completed by late 2025. Burudyara will improve the capacity of Mental Health Services to provide appropriate mental health care for people with mental illness who have been in contact with the criminal justice system.

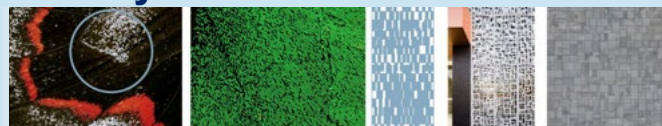
Colour



Form



Density





ARTIST IMPRESSION MULTI-STOREY CAR PARK

Multi-storey car park

The new \$34 million multi-storey car park is taking shape at Concord Hospital with the concrete pour for level one expected to begin soon.

Work on the project follows the opening in July of the P3 on-grade car park, which provided 300 parking spaces for staff.

Principal contractor Lipman began ground works for the multi-storey car park in July and has since finished site remediation, bulk excavation and the concrete pour of the ground floor.

The formwork for level one has been put in place and it is expected the concrete pour for this level will be completed by the end of 2023.

The new car park will provide more than 550 new spaces for hospital patients, staff and visitors. It will include 10 accessible spaces, lift access and provision for future EV charging stations. Security features will include CCTV and duress points on each level.

When the project is complete, expected late in 2024, there will be more than 2300 car spaces available across the campus.

The opening in July of the new P3 staff car park was celebrated with a staff barbecue. This facility provides access to parking for staff while work proceeds on the multi-storey car park.

Work on both sites has been part of the Concord Hospital redevelopment – a partnership between Health Infrastructure and Sydney Local Health District.

The \$341 million stage one redevelopment of Concord Hospital included the new Rusty Priest building which expanded and enhanced a range of clinical services.



AERIAL VIEW OF THE NEW P3 CAR PARK



SLHD CHIEF EXECUTIVE, TERESA ANDERSON AND STAFF AT THE P3 CAR PARK OPENING